

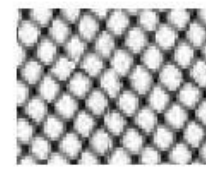
**North Carolina Region, Figure 4.2
Radiation Map, Nuclear War Survival Skills, p 30**



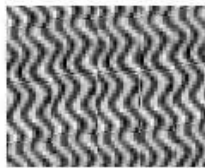
0-
100 R



101-
450 R



451-
2500 R



2501-
5000 R



5001-
10,000 R



10,001-
20,000 R



> 20,000 R

EXPOSURE TYPE	GENERAL SYMPTOMS	ONSET OF SYMPTOMS	ABLE TO WORK	MEDICAL CARE	DEATHS	REMARKS
50-200r	Nausea, weakness, fatigue, possible vomiting, possible radiation burns	Within 24 hours	Yes	No	5%	
200-450r	Nausea, weakness, fatigue, vomiting, diarrhea, loss of hair, radiation burns, easy to bleed	3-6 hours	No	Yes	Less than 50%	Sick a few days, 1-2 weeks temporary recovery, then serious symptoms
450-600r	Same as 200-450r, plus hemorrhaging and infection	Within 3 hours	No	Yes	More than 50%	1 week temporary recovery, die without medical aid
600r+	Same as 450-600r, plus severe bloody diarrhea	Within 1 hour	No	Yes	100%	Death within 14 days
2000r+	Complete incapacitation	Within minutes	No	Yes	100%	Death within hours
Internal Radiation	Varies in proportion to internal dose	Varies	Varies	Varies	Varies	
Mild skin Injury	Itching and/or redness of skin, possible hair loss	1-2 days	Yes	No	None	
Severe Injury	Same as mild, plus radiation burns, & hair loss	1-2 days	Yes	Yes	Varies	Death depends on burn area